



CAMFED

**YOUR
TUNAINUANA
FILM SCREENING
PACK**





JOIN ME FOR A WORLD-CHANGING MOVIE NIGHT

What: Screening of CAMFED's short film:

Tunainuana (Together We Rise)

Official selection of MOUNTAINFILM 2024, with snacks, drinks and lively discussion.

When:

Where:

Why: To learn about the rise of a sisterhood of change leaders across Africa, and support their girls' education work by raising more funds.

What to bring:

Suggested donation:

100% of the proceeds from this event will go to CAMFED



ABOUT TUNAINUANA

Tunainuana was created by Novo Films with support from the Skoll Foundation. It was filmed with CAMFED at several locations across Tanzania, leading the viewer from the rural village of Rutete and the local primary school to a secondary boarding school and nursing college. It tells the story of **Lydia Wilbard**, from being a girl struggling to maintain her grip on education to founding a sisterhood of women leaders - the CAMFED Association - and becoming CAMFED's Executive Director: Learning and Engagement.

Lydia's family and community

Lydia's daughter, Caren, stars in the film as 10-year old Lydia. Lydia's sister, Justa, features as their mother. Several members of Lydia's community also play a role.





♥ THE POWER OF SISTERHOOD ♥

“This story is not just me. It’s the story of a girl in rural areas.”

The CAMFED Association is a sisterhood of young women like Lydia who have beaten the odds to go to school and succeed – and are making sure that no girl or young woman walks the path alone. This is what sits at the heart of CAMFED’s proven solution – helping girls to thrive in school, and equipping them with the skills and community support they need to succeed after graduation.

“I feel happy because now I am no longer doing it alone. I call upon others and we figure it out.”

“Education for women is actually a solution for climate change, for health, for a better life, for both children and the society.”





DISCUSSION GUIDE



You might want to use some of these questions to **lead a discussion about the themes the film touched on**, or create your own list:

- What touched you most about this film, and why?
- What have you learned?
- What are you curious about?
- Is there a particular action you plan to take as a result of seeing this film?
- What are the barriers to girls' education or women's leadership in your community? What can be done to remove them?
- What is so powerful about women from a disadvantaged background joining forces to tackle girls' exclusion from education?
- How might this model translate to other areas of society beyond education?





TANZANIAN PIRI-PIRI POPCORN

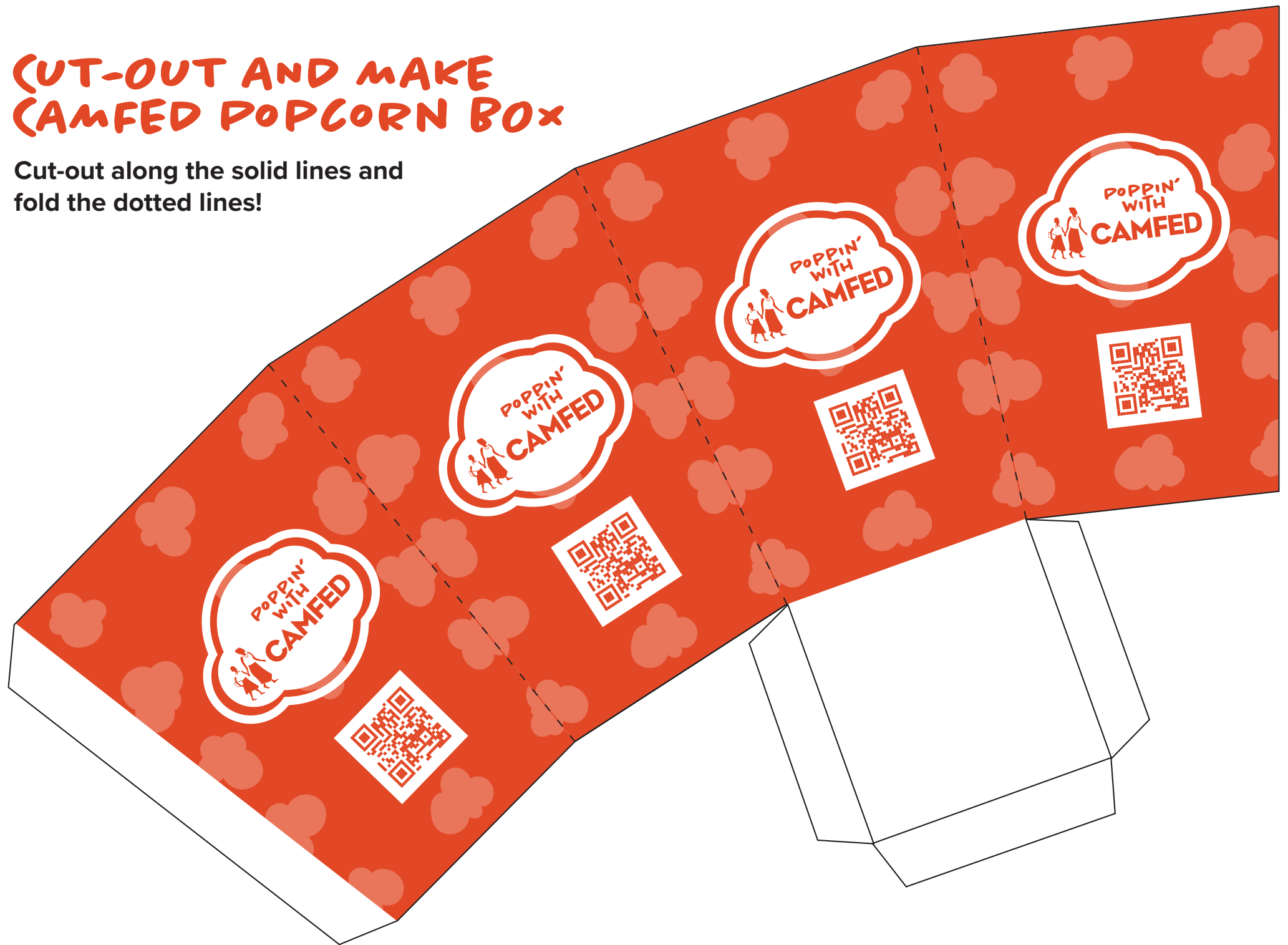


Some like it hot! If you have an air popper, try adding a teaspoon of Piri Piri Pepper along with salt and some olive oil to your popped corn. Piri Piri is the African Bird's Eye pepper - and it's HOT, so adjust to taste. You can, of course, use your preferred chilli powder.

If you're popping the corn in a pan, try mixing each tablespoon of popcorn with $\frac{1}{4}$ tablespoon of olive oil, $\frac{1}{2}$ teaspoon of salt and $\frac{1}{2}$ a teaspoon of chilli powder. Stir well and marinade over 1-2 days, then pop just before your big night.

CUT-OUT AND MAKE CAMFED POPCORN BOX

Cut-out along the solid lines and
fold the dotted lines!





EVA'S PINEAPPLE MOCKTAIL



Inspired by Eva, a member of the CAMFED Association of women leaders educated with CAMFED support in Tanzania (who also features in Tunainuana), this zingy drink will be a big hit on a hot night. Among her many successful businesses, Eva owns a thriving pineapple farm.

INGREDIENTS (MAKES 2)

300 ml (½ pint) of pressed
pineapple juice

1 fresh lime

Crushed ice

1 tsp clear honey

Vanilla sugar

Slice of passionfruit or lime

DIRECTIONS

1. Dip a pastry brush in the honey and lightly paint the rim of the glasses. Turn the glasses upside down and dip gently into a dish of vanilla sugar. Then put the glasses in the fridge.
2. Squeeze the lime juice into a cocktail shaker, add the pineapple juice and a handful of ice. Shake together until the outside of the shaker feels cold.
3. Strain into the glasses, add extra ice cubes
4. Decorate with a slice of passionfruit or lime.
5. This one's easy to turn into your favourite cocktail too. Always drink responsibly.





CAMFED

LEARN, THRIVE AND LEAD CHANGE

EVA'S PINEAPPLE MOCKTAIL

A zingy drink inspired by Eva, a member of the CAMFED Association of women leaders educated with CAMFED support in Tanzania (who also features in Tunainuana). Among her many successful businesses, Eva owns a thriving pineapple farm.

Contains: Pineapple juice, lime, ice, honey, vanilla sugar, passionfruit.

PRICE PER GLASS:



OTHER WAYS TO FUNDRAISE



There are so many ways that you can fundraise for CAMFED at your movie screening event. Why not try:

- **BLANKET RENTAL**

Make your screening extra-cosy by offering blankets to guests for rental at a small fee... all proceeds to CAMFED!

- **SNACK STALL**

Get creative in the kitchen and offer a range of snacks... the more African-themed the better!

- **GUESS THE WEIGHT OF THE BOOKS**

Grabbing a pile of books, weighing them and inviting guests to guess the weight is a quick, easy and fun game... use the sheet on the following page to help with this activity!

GUESS THE WEIGHT OF THE BOOKS

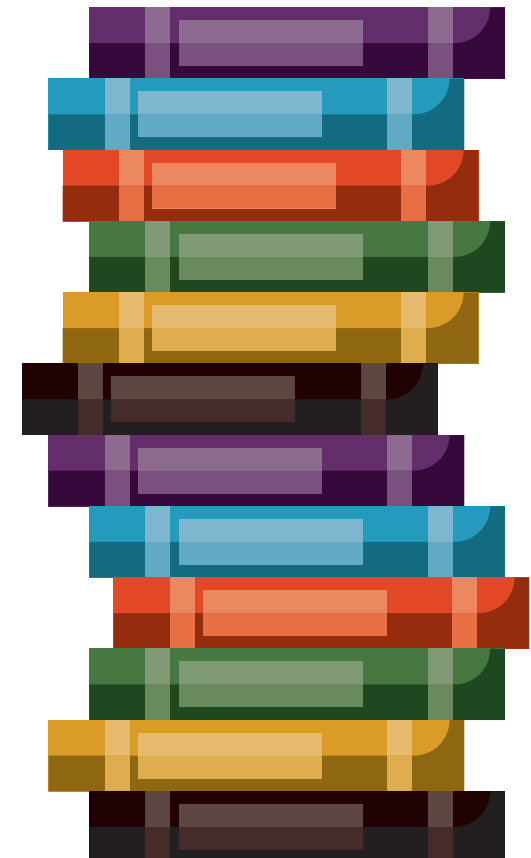
Write your name in the box closest to how much you think the pile of books weighs!



Price per entry:

Prize:

100 grams	200 grams	300 grams	400 grams	500 grams	600 grams	700 grams	800 grams	900 grams	1000 grams
1100 grams	1200 grams	1300 grams	1400 grams	1500 grams	1600 grams	1700 grams	1800 grams	1900 grams	2000 grams
2100 grams	2200 grams	2300 grams	2400 grams	2500 grams	2600 grams	2700 grams	2800 grams	2900 grams	3000 grams
3100 grams	3200 grams	3300 grams	3400 grams	3500 grams	3600 grams	3700 grams	3800 grams	3900 grams	4000 grams





w: camfed.org | e: contact@camfed.org | t: +44 (0)1223 362 648

✕ @Camfed f /camfed i /camfed

Company No: 02874653



Registered with
**FUNDRAISING
REGULATOR**

Registered Charity No. 1029161